

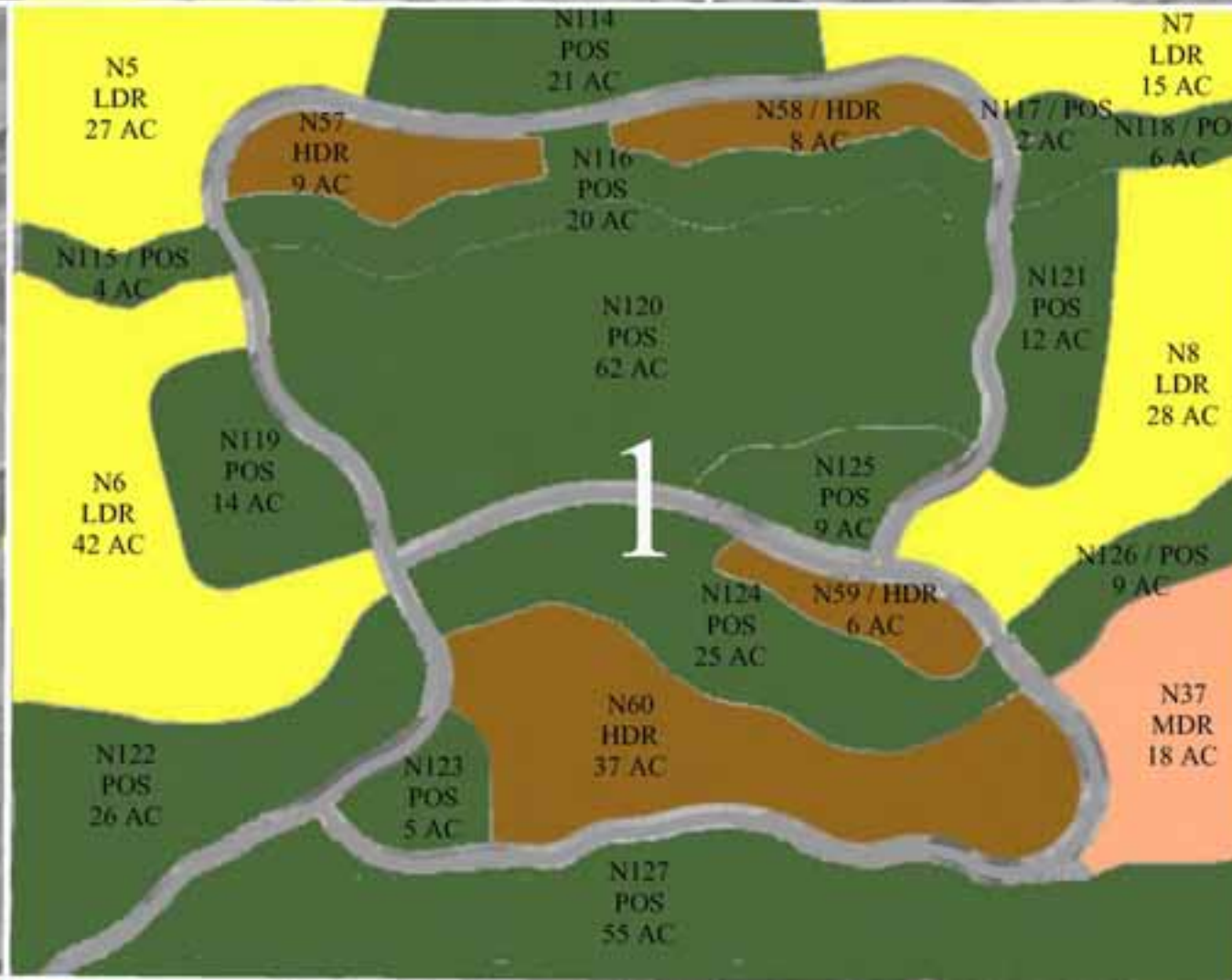
# SECTION 1

## LEGEND

LDR (Low Density Res.)	112 AC
MDR (Medium Density Res.)	18 AC
HDR (High Density Res.)	60 AC
POS (Parks & Open Space)	270 AC
<b>TOTAL</b>	<b>460 AC</b>
ROADS OS SHOWN	40 AC
OVERALL PARCEL AC	500 AC

## KEY MAP

Black Box Represents Specific Area



## LAUGHLIN RANCH TYPICAL SECTION IDENTIFICATION

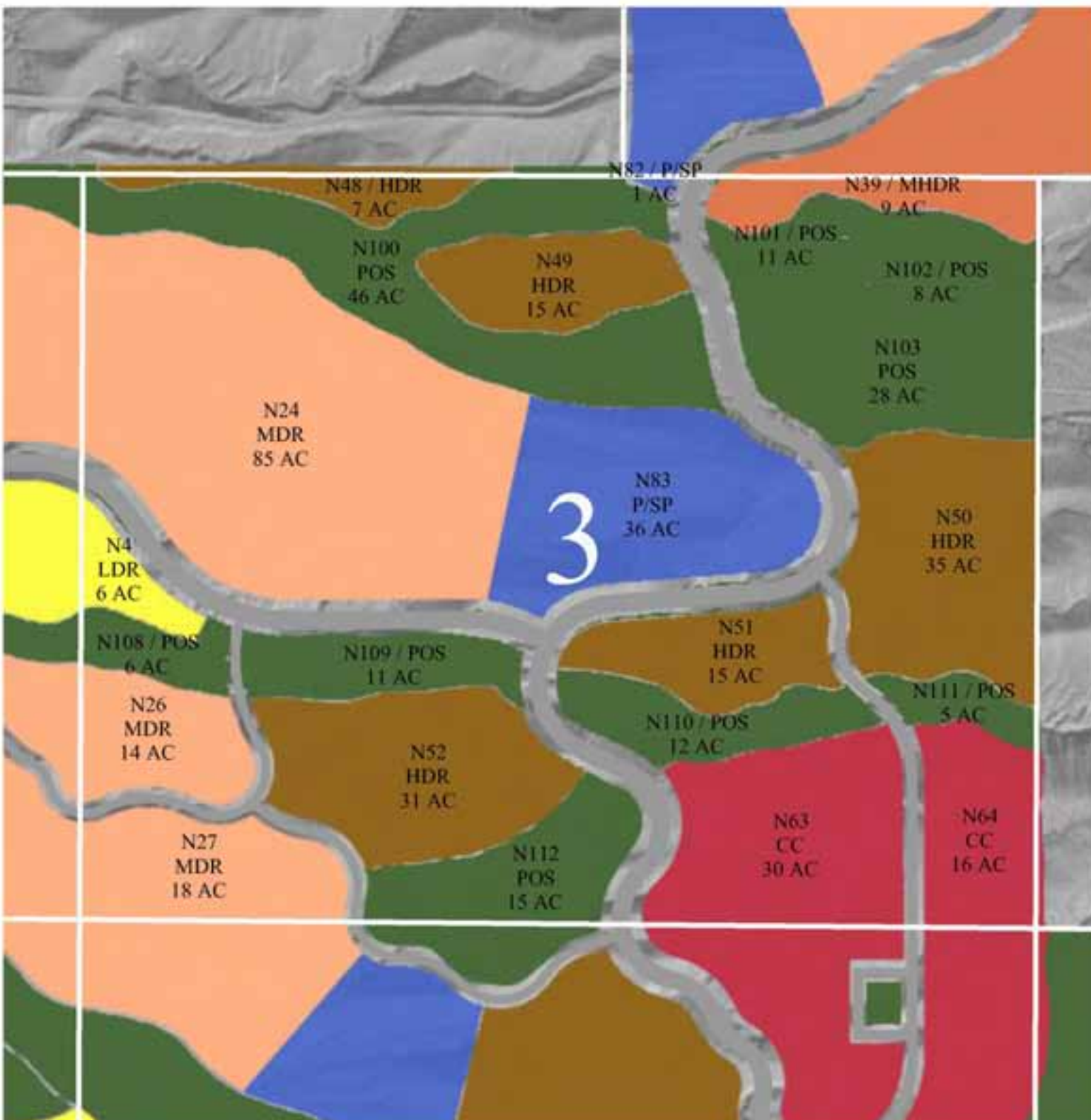
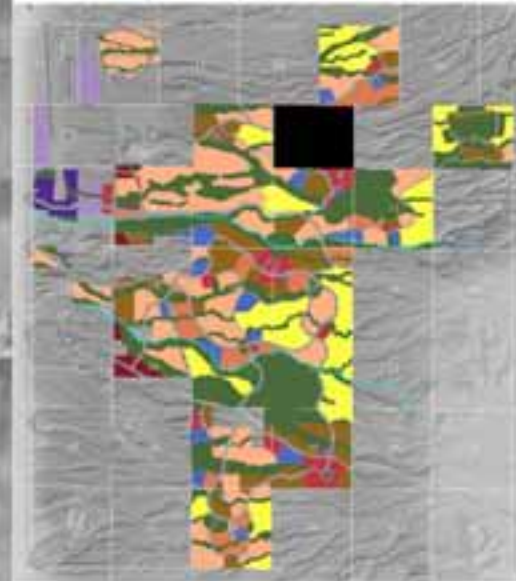
# SECTION 3

## LEGEND

LDR (Low Density Res.)	6 AC
MDR (Medium Density Res.)	117 AC
MHDR (Med. High Den. Res.)	9 AC
HDR (High Density Res.)	103 AC
CC (Community Commercial)	46 AC
P/PS (Public/Semi-Public)	37 AC
POS (Parks & Open Space)	142 AC
<b>TOTAL</b>	<b>460 AC</b>
ROADS OS SHOWN	40 AC
OVERALL PARCEL AC	500 AC

## KEY MAP

Black Box Represents Specific Area



## LAUGHLIN RANCH TYPICAL SECTION IDENTIFICATION

# SECTION 4

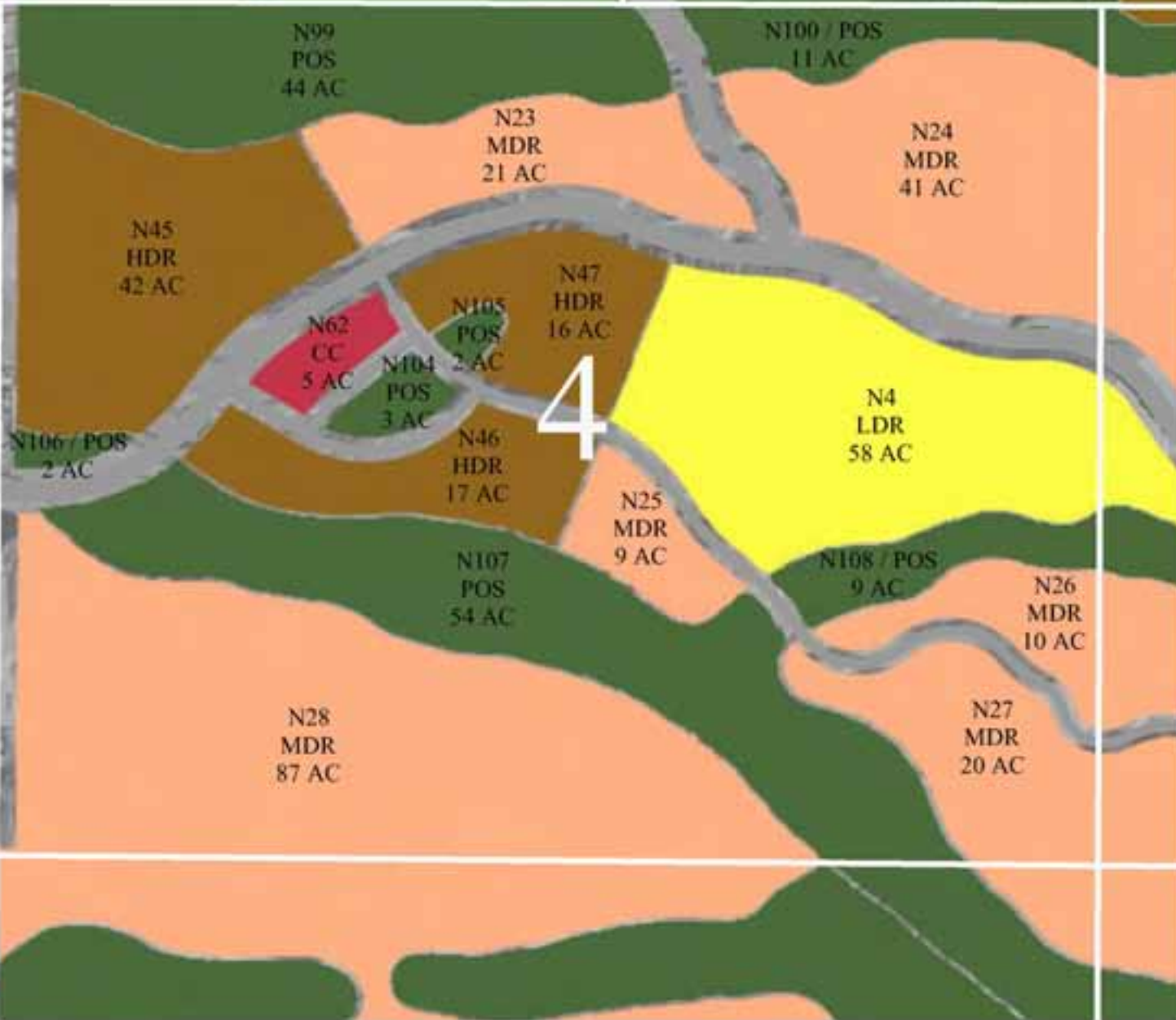
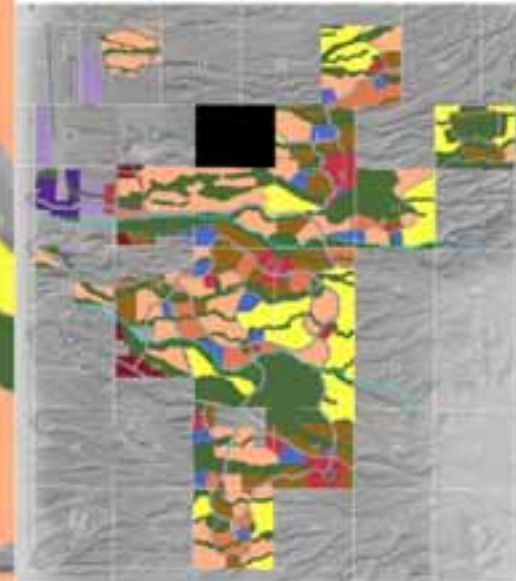
## LEGEND

LDR (Low Density Res.)	58 AC
MDR (Medium Density Res.)	188 AC
HDR (High Density Res.)	75 AC
CC (Community Commercial)	5 AC
POS (Parks & Open Space)	125 AC

TOTAL	451 AC
ROADS AS SHOWN	49 AC
OVERALL PARCEL AC	500 AC

## KEY MAP

Black Box Represents Specific Area



## LAUGHLIN RANCH TYPICAL SECTION IDENTIFICATION

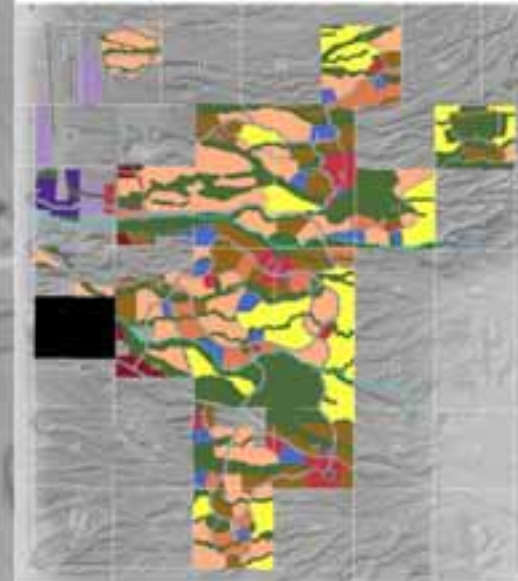
# SECTION 6

## LEGEND

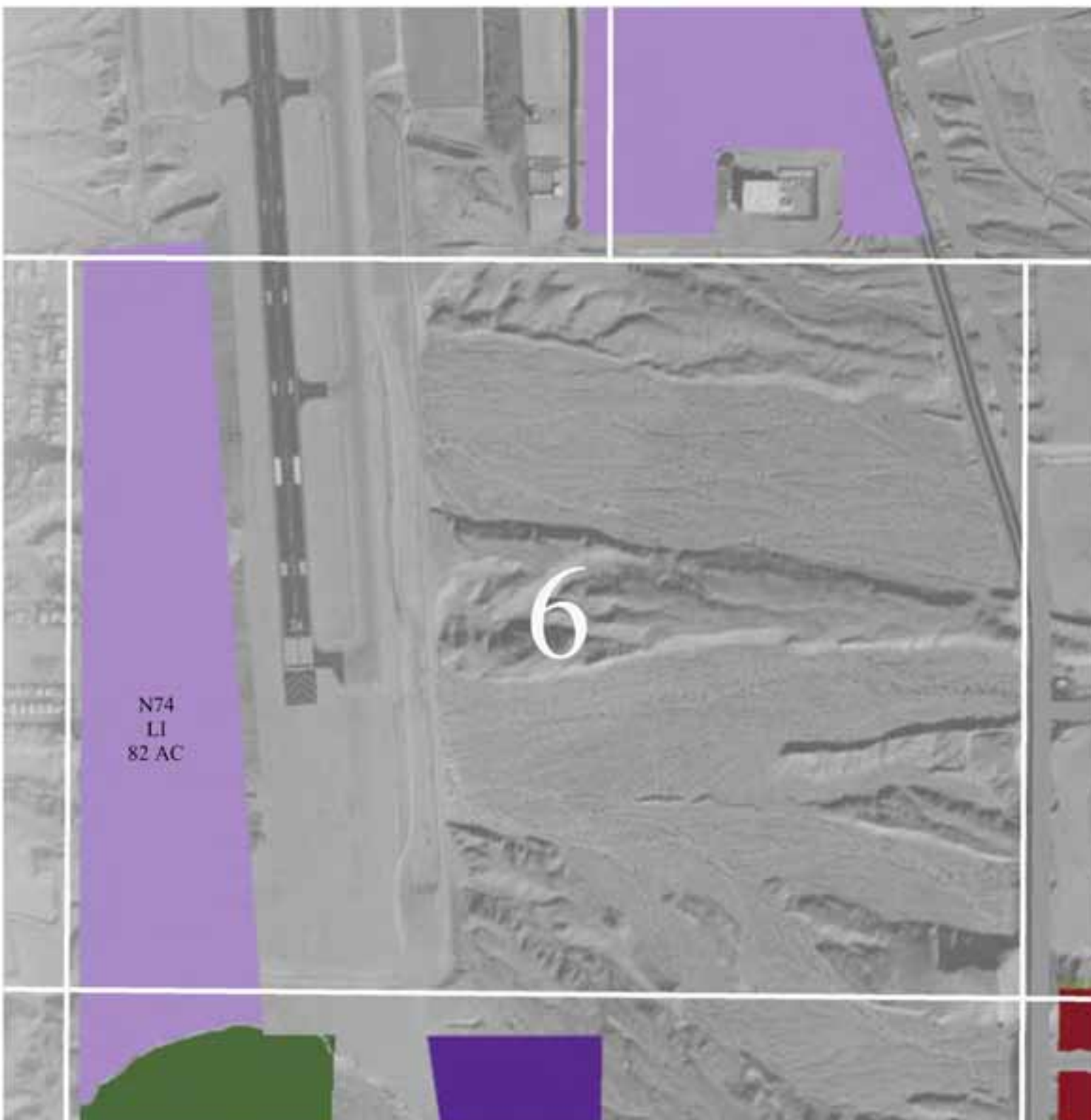
LI (Light Industrial)	70 AC
TOTAL	82 AC
OVERALL PARCEL AC	640 AC

## KEY MAP

Black Box Represents Specific Area



## LAUGHLIN RANCH TYPICAL SECTION IDENTIFICATION



N74  
LI  
82 AC

# SECTION 7

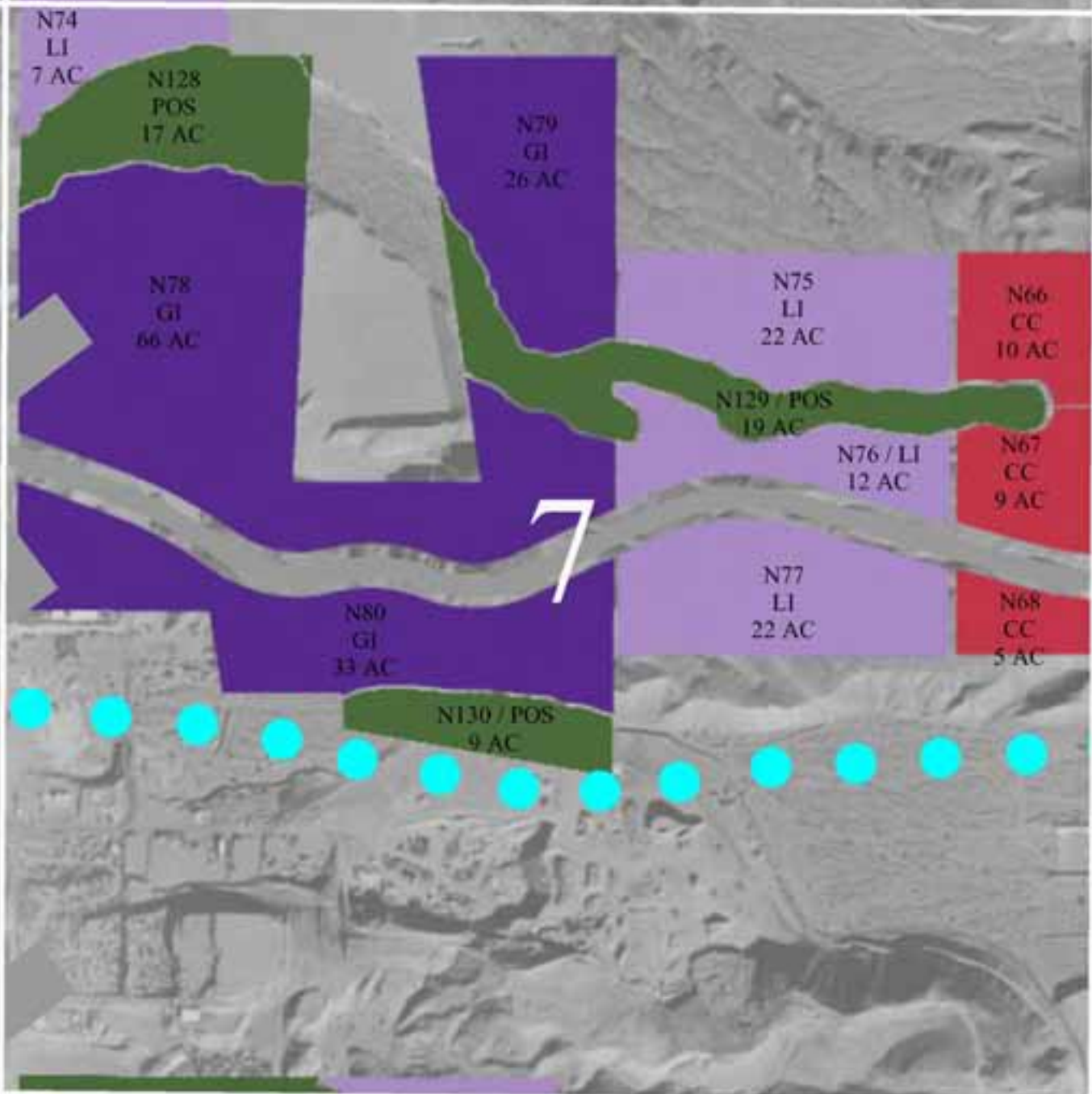
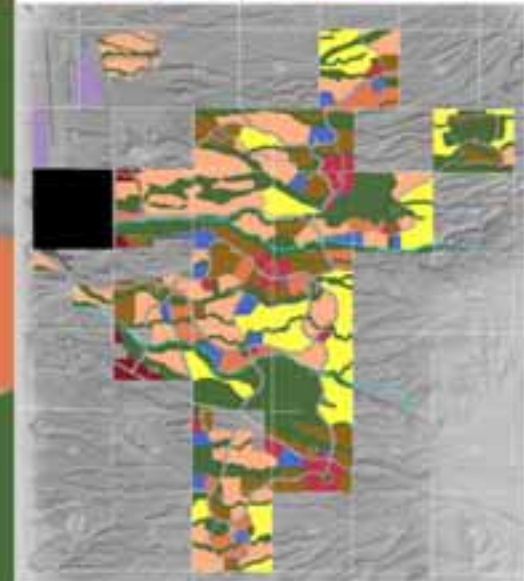
## LEGEND

CC	(Community Commercial)	19 AC
LI	(Light Industrial)	63 AC
GI	(General Industrial)	125 AC
POS	(Parks & Open Space)	45 AC
Non-Laughlin Ranch Land		350 AC

TOTAL		602 AC
ROADS AS SHOWN		38 AC
OVERALL PARCEL AC		640 AC

## KEY MAP

Black Box Represents Specific Area



## LAUGHLIN RANCH TYPICAL SECTION IDENTIFICATION

# SECTION 8

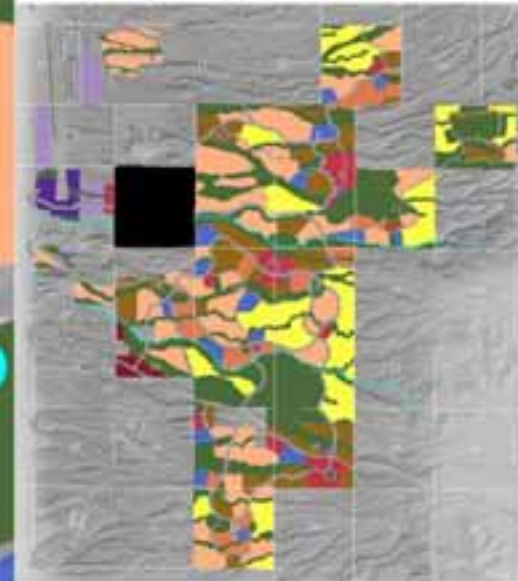
## LEGEND

MDR (Medium Density Res.)	159 AC
MHDR (Med. High Den. Res.)	20 AC
HDR (High Density Res.)	22 AC
CC (Community Commercial)	10 AC
RC (Regional Commercial)	32 AC
P/PS (Public/Semi-Public)	10 AC
POS (Parks & Open Space)	267 AC
Non-Laughlin Ranch Land	42 AC

TOTAL	562 AC
ROADS AS SHOWN	78 AC
OVERALL PARCEL AC	640 AC

## KEY MAP

Black Box Represents Specific Area



## LAUGHLIN RANCH TYPICAL SECTION IDENTIFICATION

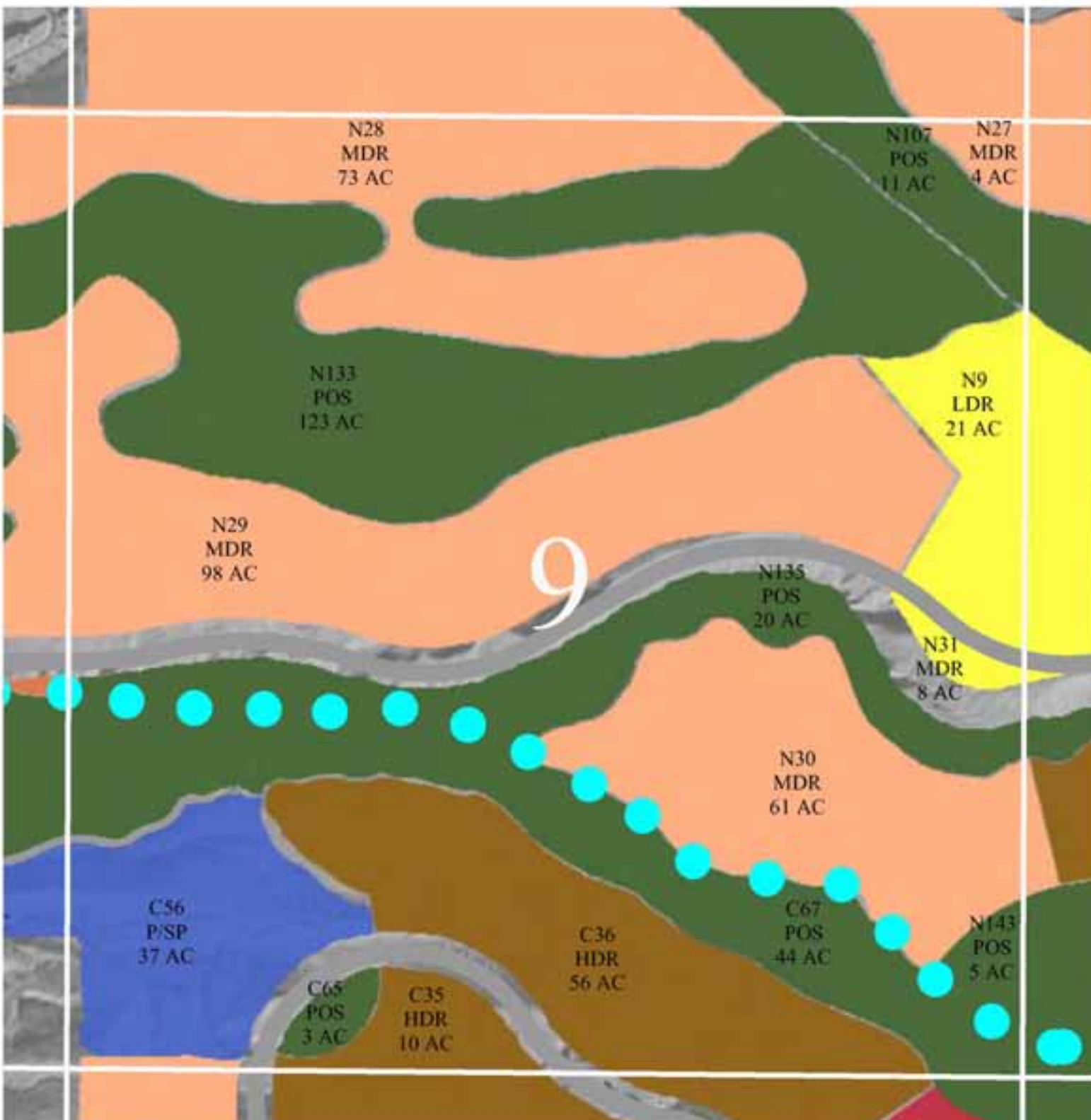
# SECTION 9

## LEGEND

LDR (Low Density Res.)	21 AC
MDR (Medium Density Res.)	244 AC
HDR (High Density Res.)	66 AC
P/PS (Public/Semi-Public)	37 AC
POS (Parks & Open Space)	206 AC
<b>TOTAL</b>	<b>574 AC</b>
ROADS AS SHOWN	66 AC
OVERALL PARCEL AC	640 AC

## KEY MAP

Black Box Represents Specific Area



## LAUGHLIN RANCH TYPICAL SECTION IDENTIFICATION

# SECTION 10

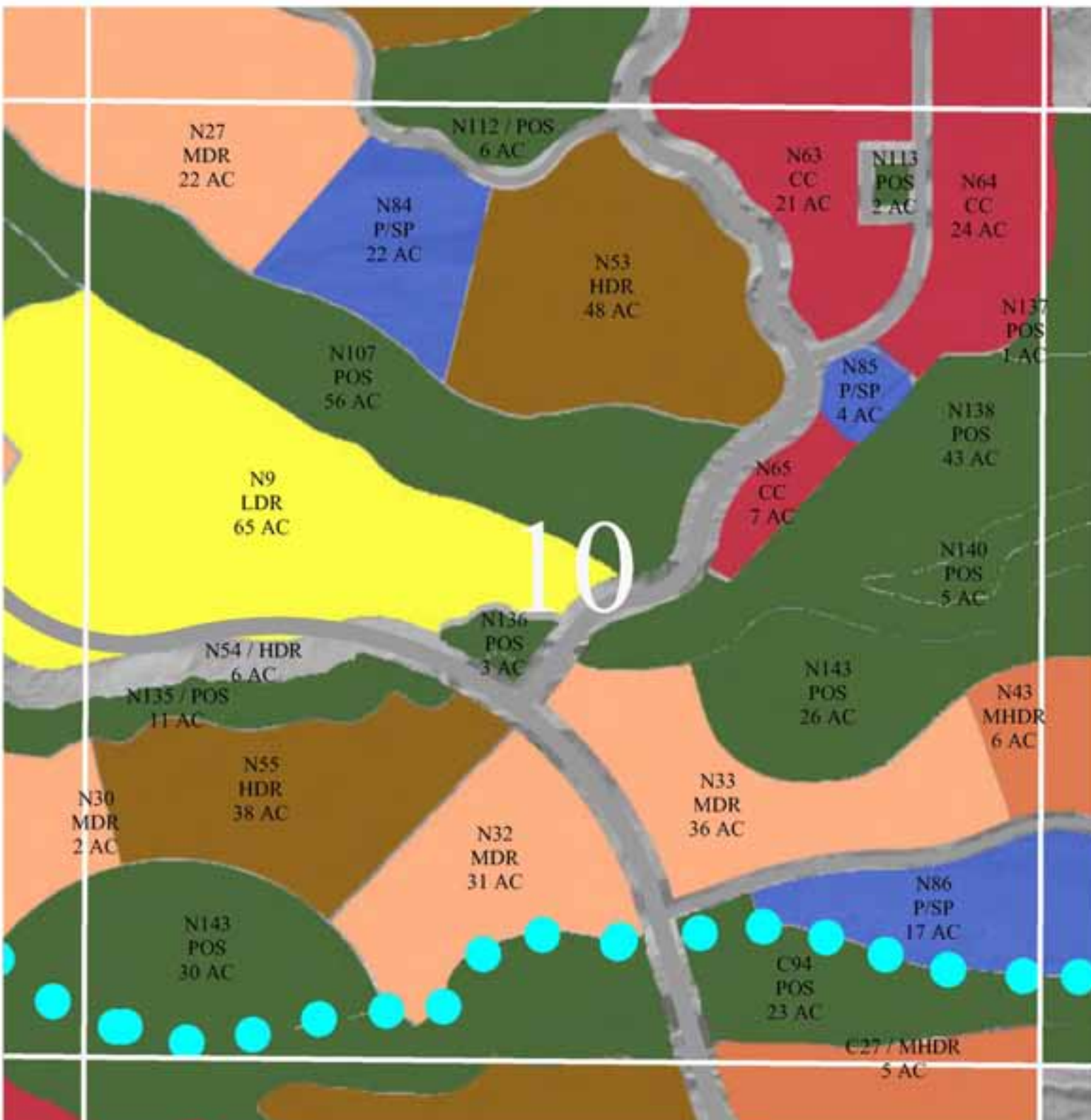
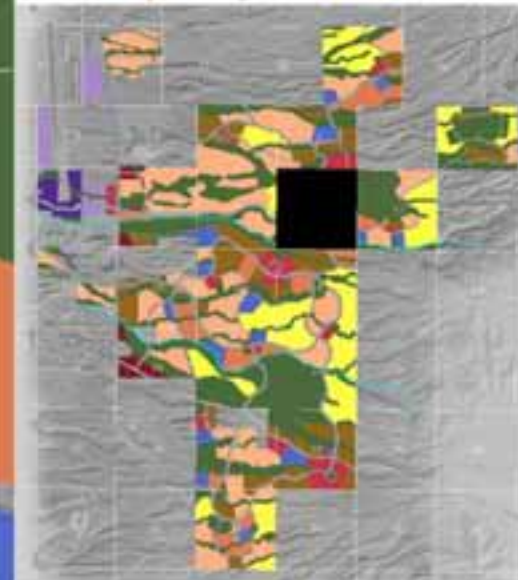
## LEGEND

LDR (Low Density Res.)	65 AC
MDR (Medium Density Res.)	91 AC
MHDR (Med. High Den. Res.)	11 AC
HDR (High Density Res.)	92 AC
CC (Community Commercial)	52 AC
P/PS (Public/Semi-Public)	43 AC
POS (Parks & Open Space)	210 AC

TOTAL	564 AC
ROADS AS SHOWN	76 AC
OVERALL PARCEL AC	640 AC

## KEY MAP

Black Box Represents Specific Area



## LAUGHLIN RANCH TYPICAL SECTION IDENTIFICATION



CC  
16 AC

# SECTION 11

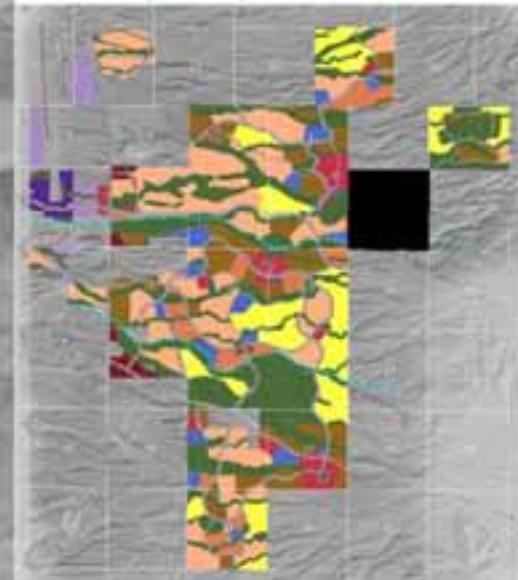
## LEGEND

LDR (Low Density Res.)	156 AC
MDR (Medium Density Res.)	114 AC
MHDR (Med. High Den. Res.)	30 AC
HDR (High Density Res.)	11 AC
CC (Community Commercial)	6 AC
P/PS (Public/Semi-Public)	25 AC
POS (Parks & Open Space)	285 AC

TOTAL	627 AC
ROADS AS SHOWN	13 AC
OVERALL PARCEL AC	640 AC

## KEY MAP

Black Box Represents Specific Area



# 11

N137  
POS  
46 AC

N36  
MDR  
60 AC

N139  
POS  
14 AC

N138  
POS  
72 AC

N10  
LDR  
45 AC

N140  
POS  
86 AC

N141 / POS  
11 AC

N143  
POS  
12 AC

N142 / POS  
2 AC

N43  
MHDR  
30 AC

N35  
MDR  
17 AC

N56  
HDR  
11 AC

N70 / CC  
6 AC

N11  
LDR  
111 AC

N86  
P/SP  
13 AC

N34  
MDR  
37 AC

N145  
POS  
7 AC

N87  
P/SP  
12 AC

C94  
POS  
35 AC

## LAUGHLIN RANCH TYPICAL SECTION IDENTIFICATION

# SECTION 15

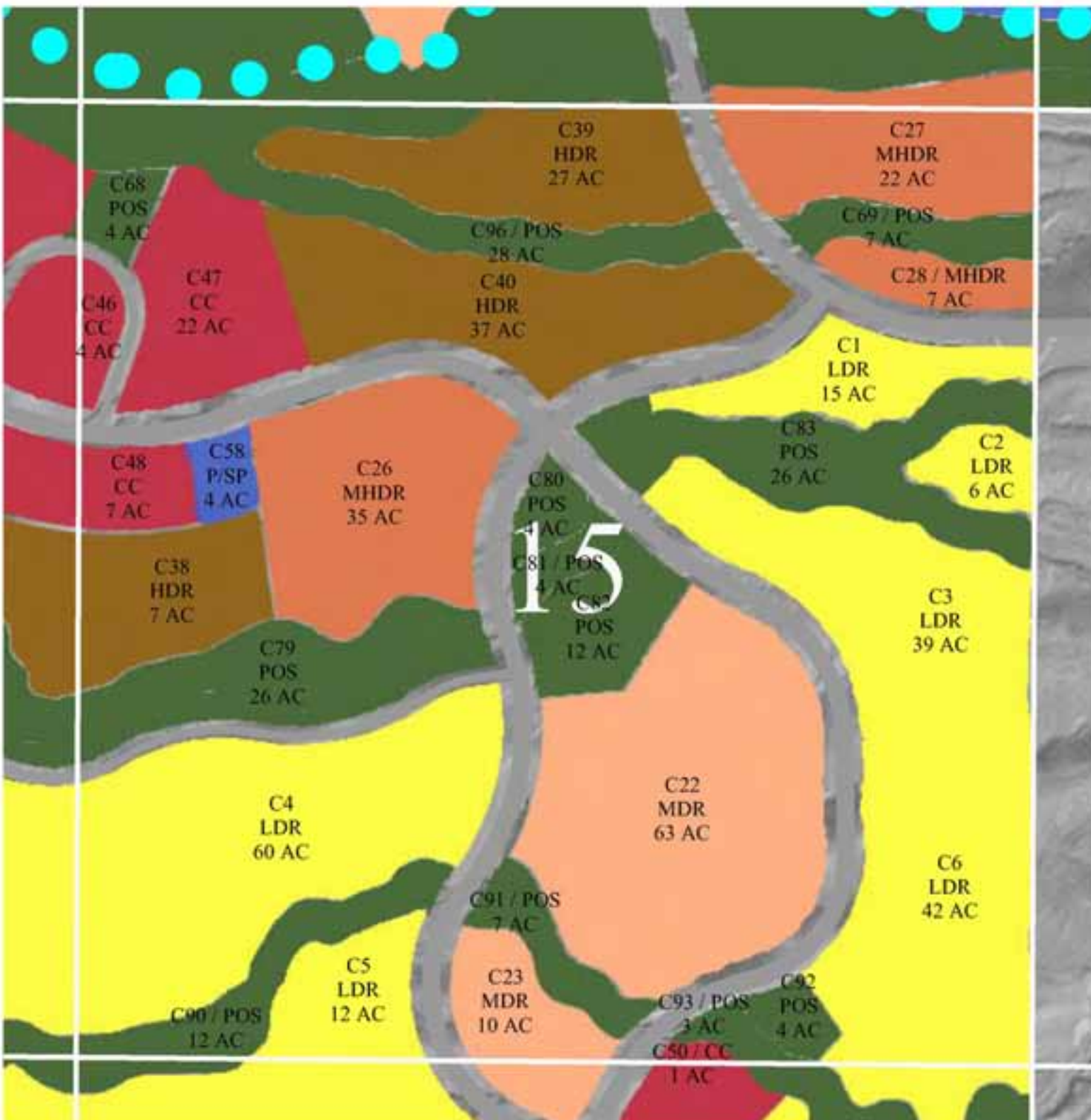
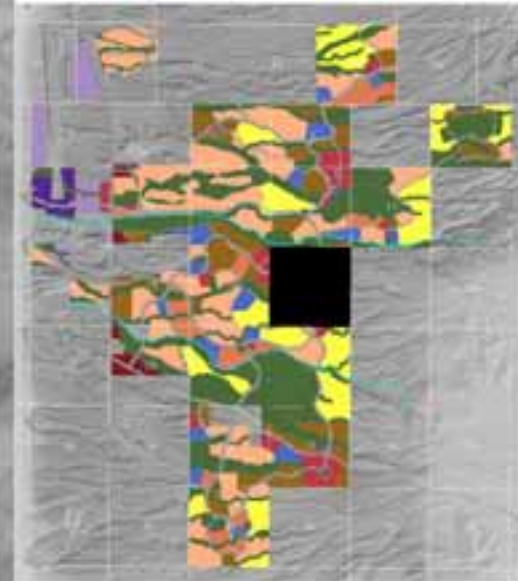
## LEGEND

LDR (Low Density Res.)	174 AC
MDR (Medium Density Res.)	73 AC
MHDR (Med. High Den. Res.)	64 AC
HDR (High Density Res.)	71 AC
CC (Community Commercial)	34 AC
P/PS (Public/Semi-Public)	4 AC
POS (Parks & Open Space)	137 AC

TOTAL	557 AC
ROADS AS SHOWN	83 AC
OVERALL PARCEL AC	640 AC

## KEY MAP

Black Box Represents Specific Area



## LAUGHLIN RANCH TYPICAL SECTION IDENTIFICATION

# SECTION 16

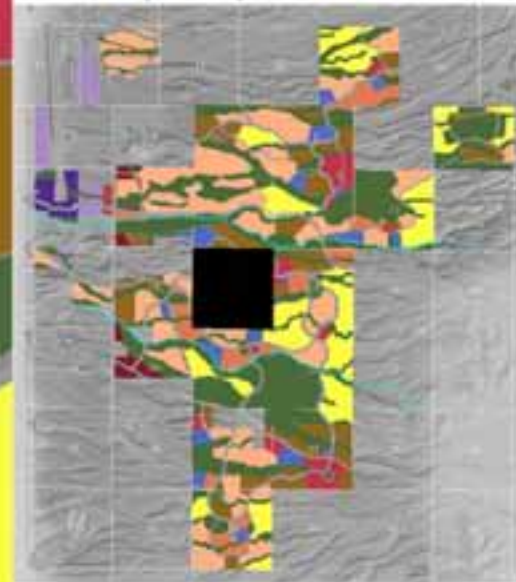
## LEGEND

LDR (Low Density Res.)	70 AC
MDR (Medium Density Res.)	159 AC
MHDR (Med. High Den. Res.)	32 AC
HDR (High Density Res.)	136 AC
CC (Community Commercial)	55 AC
P/PS (Public/Semi-Public)	49 AC
POS (Parks & Open Space)	93 AC

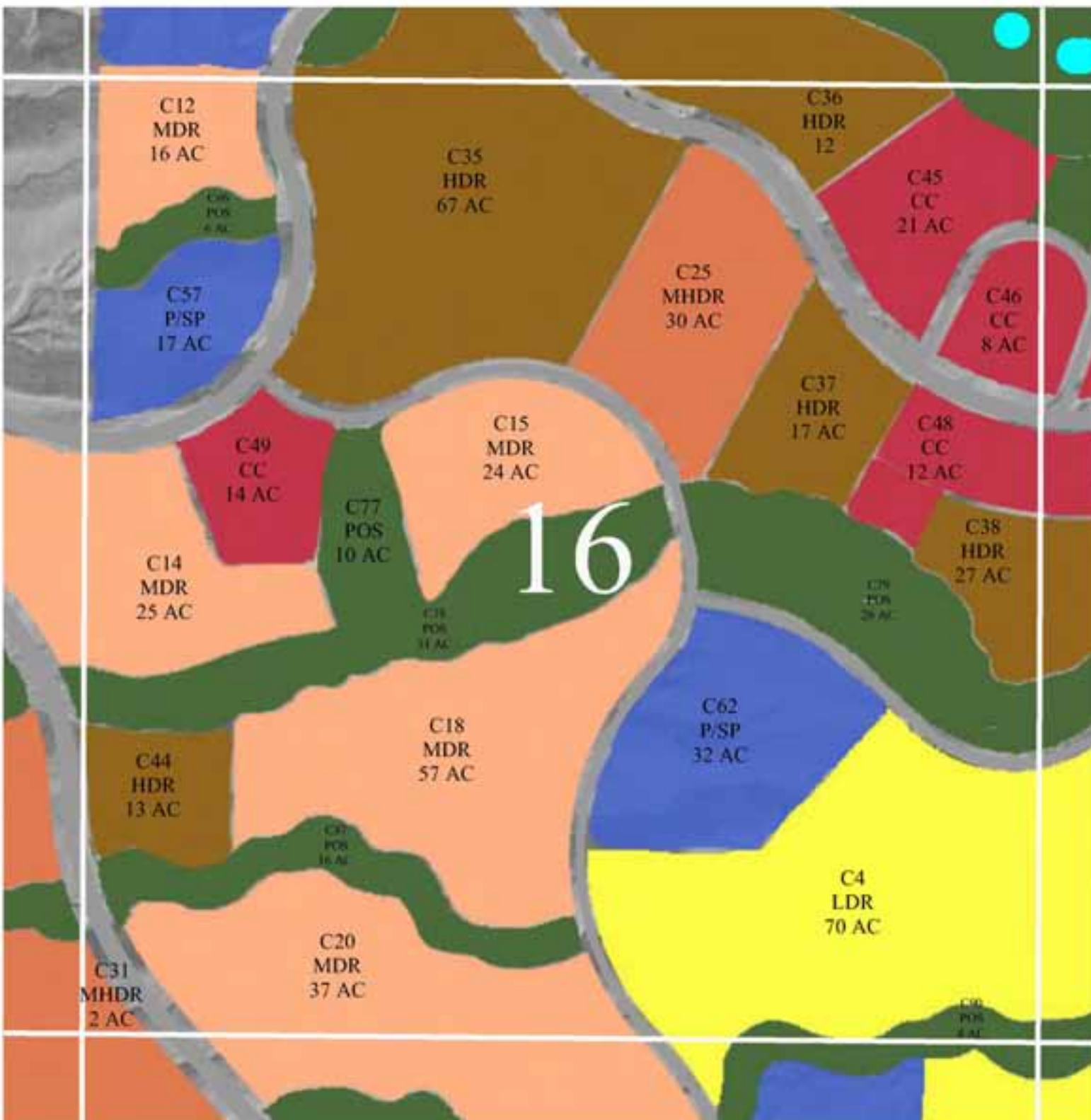
TOTAL	594 AC
ROADS AS SHOWN	46 AC
OVERALL PARCEL AC	640 AC

## KEY MAP

Black Box Represents Specific Area



# 16



## LAUGHLIN RANCH TYPICAL SECTION IDENTIFICATION

# SECTION 17

## LEGEND

MDR (Medium Density Res.)	107 AC
MHDR (Med. High Den. Res.)	42 AC
HDR (High Density Res.)	80 AC
P/PS (Public/Semi-Public)	12 AC
POS (Parks & Open Space)	82 AC
RC (Regional Commercial)	2 AC
Non-Laughlin Ranch Land	232 AC
<b>TOTAL</b>	<b>557 AC</b>
<b>ROADS AS SHOWN</b>	<b>83 AC</b>
<b>OVERALL PARCEL AC</b>	<b>640 AC</b>

## KEY MAP

Black Box Represents Specific Area



# 17



## LAUGHLIN RANCH TYPICAL SECTION IDENTIFICATION

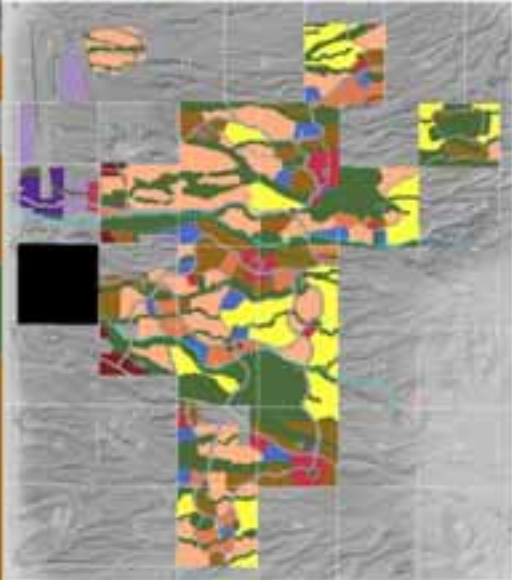
# SECTION 18

## LEGEND

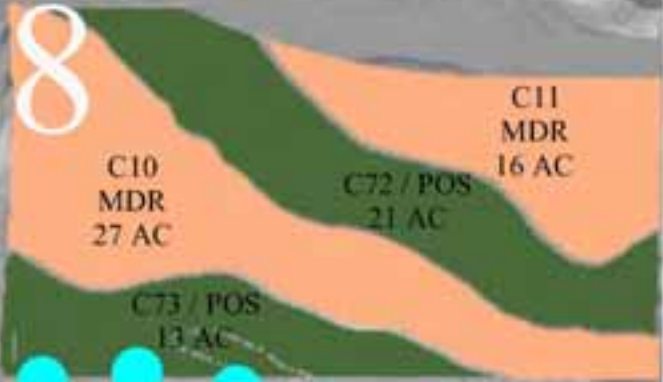
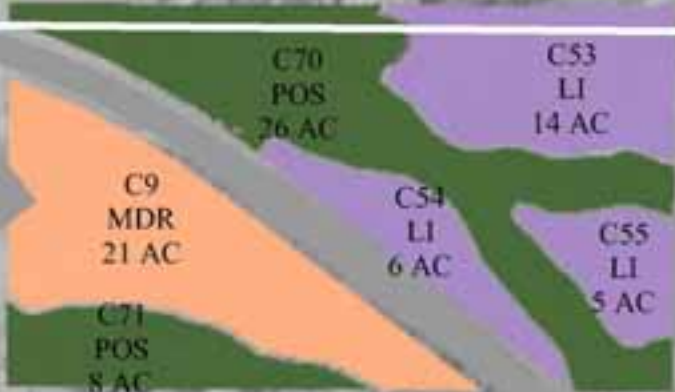
MDR (Medium Density Res.)	64 AC
LI (Light Industrial)	25 AC
POS (Parks & Open Space)	68 AC
Non-Laughlin Ranch Land	470 AC
<b>TOTAL</b>	<b>627 AC</b>
ROADS AS SHOWN	13 AC
<b>OVERALL PARCEL AC</b>	<b>640 AC</b>

## KEY MAP

Black Box Represents Specific Area



# 18



## LAUGHLIN RANCH TYPICAL SECTION IDENTIFICATION

# SECTION 20

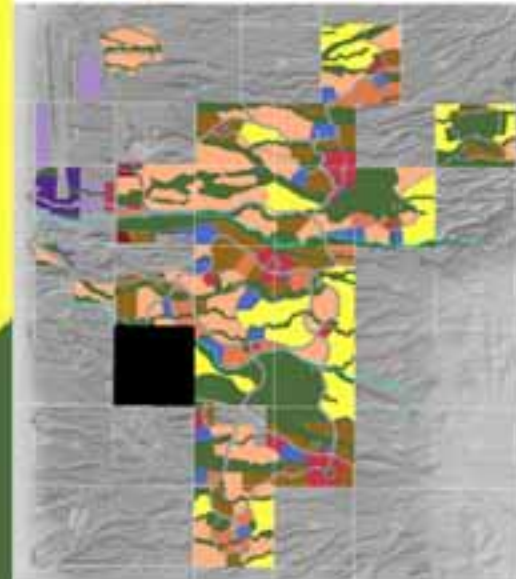
## LEGEND

LDR (Low Density Res.)	12 AC
MDR (Medium Density Res.)	52 AC
MHDR (Med. High Den. Res.)	29 AC
HDR (High Density Res.)	15 AC
RC (Regional Commercial)	71 AC
POS (Parks & Open Space)	125 AC
Non - Laughlin Ranch Land	300 AC

TOTAL	604 AC
ROADS AS SHOWN	36 AC
OVERALL PARCEL AC	640 AC

## KEY MAP

Black Box Represents Specific Area



# 20

S40  
RC  
9 AC

S49  
POS  
41 AC

S41  
RC  
16 AC

S42  
RC  
22 AC

S43  
RC  
24 AC

C19  
MHDR  
29 AC

S50  
POS  
28 AC

S6  
MDR  
52 AC

S54  
POS  
46 AC

C31  
MHDR  
15 AC

S51  
POS  
10 AC

S1  
LDR  
12 AC

## LAUGHLIN RANCH TYPICAL SECTION IDENTIFICATION

# SECTION 21

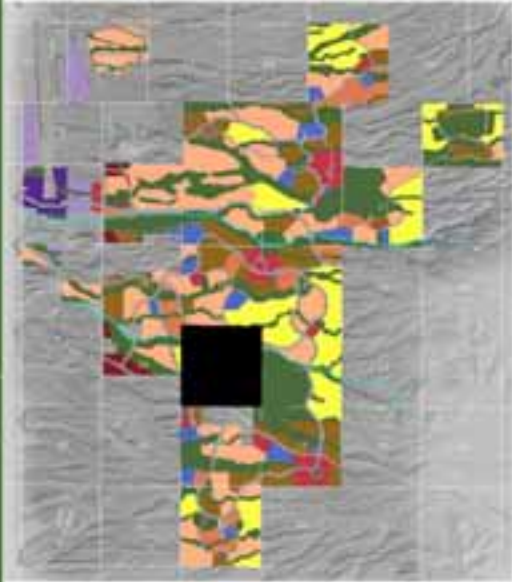
## LEGEND

LDR (Low Density Res.)	81 AC
MDR (Medium Density Res.)	46 AC
MHDR (Med. High Den. Res.)	76 AC
HDR (High Density Res.)	3 AC
CC (Community Commercial)	5 AC
P/PS (Public/Semi-Public)	42 AC
POS (Parks & Open Space)	321 AC

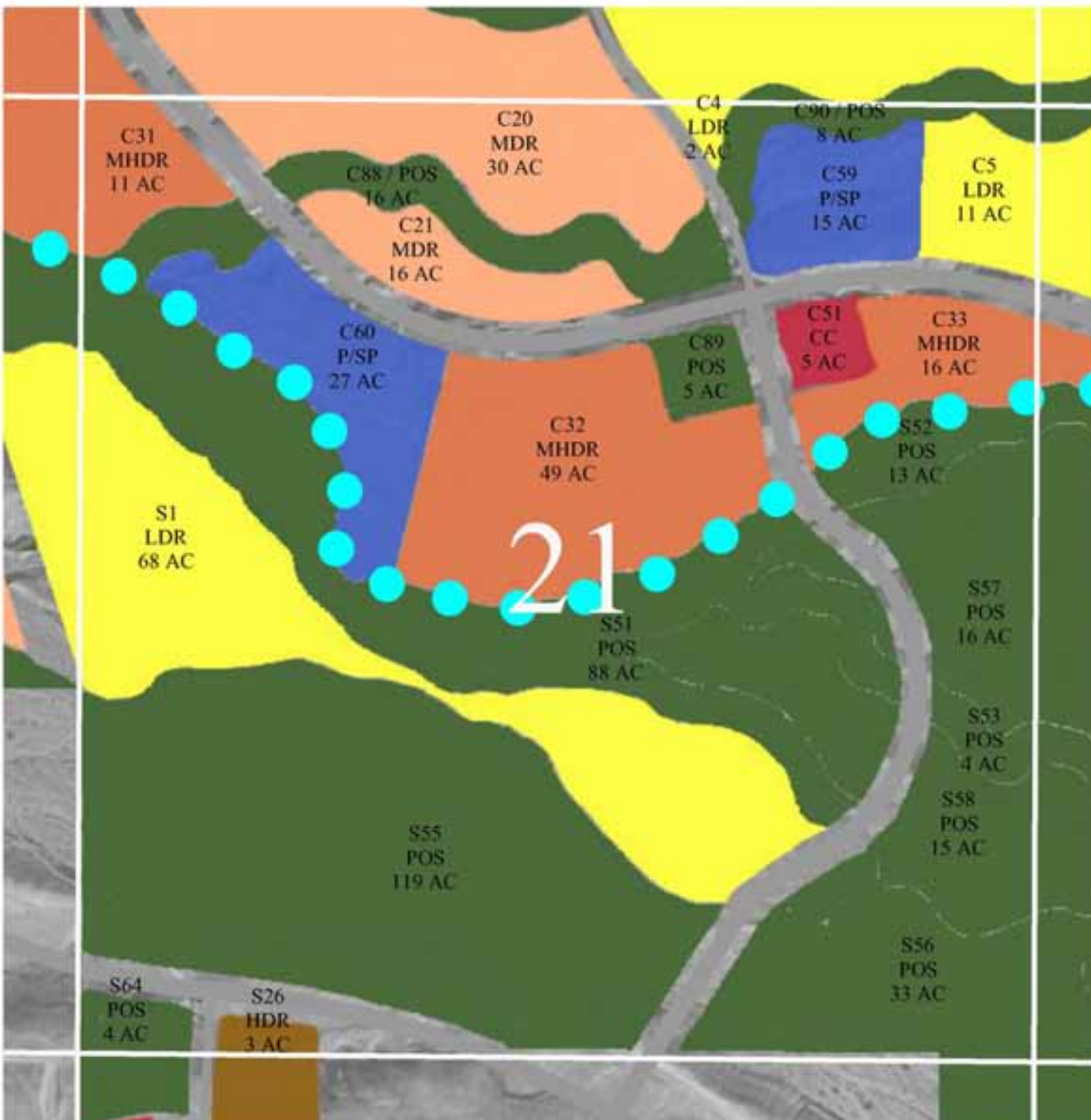
TOTAL	574 AC
ROADS AS SHOWN	66 AC
OVERALL PARCEL AC	640 AC

## KEY MAP

Black Box Represents Specific Area



# 21



## LAUGHLIN RANCH TYPICAL SECTION IDENTIFICATION

# SECTION 22

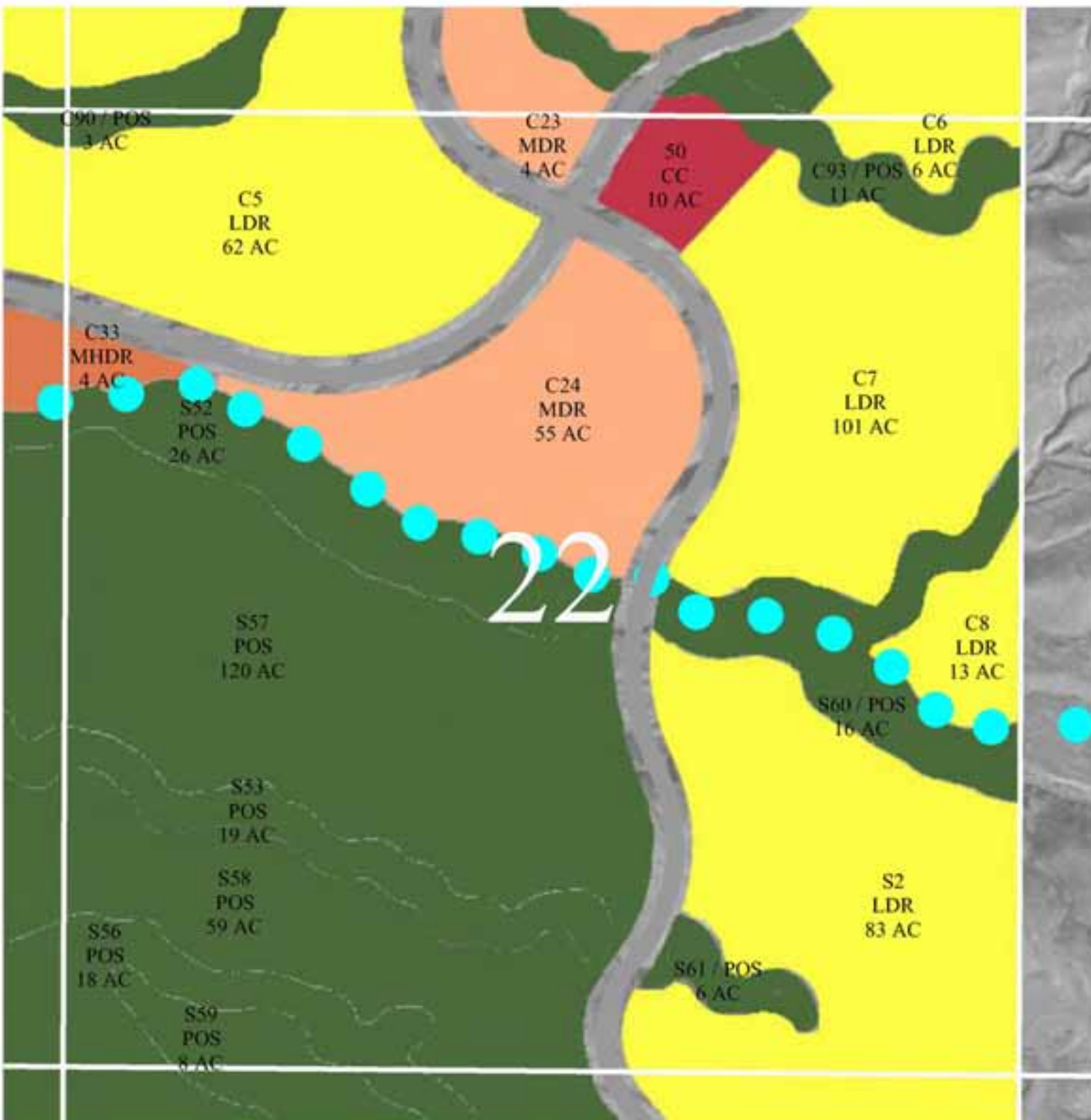
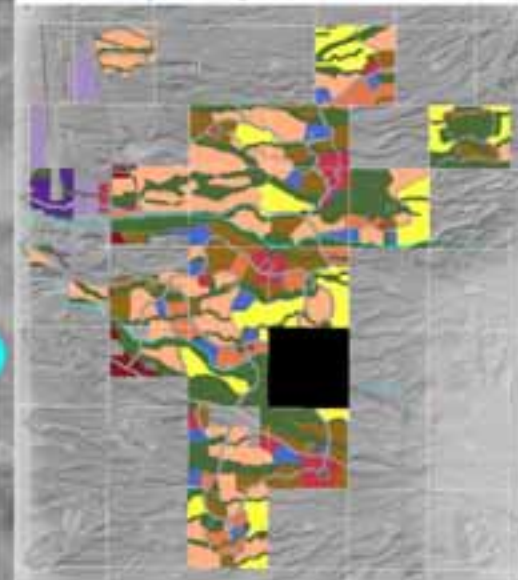
## LEGEND

LDR (Low Density Res.)	265 AC
MDR (Medium Density Res.)	59 AC
MHDR (Med. High Den. Res.)	4 AC
CC (Community Commercial)	10 AC
POS (Parks & Open Space)	286 AC

TOTAL	624 AC
ROADS AS SHOWN	16 AC
OVERALL PARCEL AC	640 AC

## KEY MAP

Black Box Represents Specific Area



## LAUGHLIN RANCH TYPICAL SECTION IDENTIFICATION



# SECTION 27

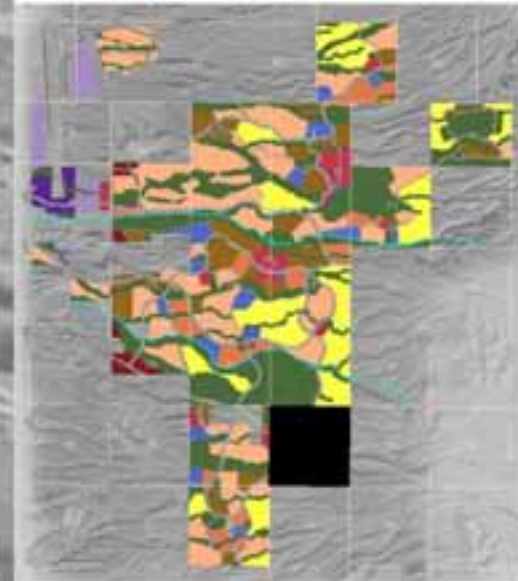
## LEGEND

LDR	(Low Density Res.)	33 AC
MDR	(Medium Density Res.)	5 AC
HDR	(High Density Res.)	209 AC
CC	(Community Commercial)	107 AC
P/PS	(Public/Semi-Public)	39 AC
POS	(Parks & Open Space)	183 AC

TOTAL		576 AC
ROADS AS SHOWN		64 AC
OVERALL PARCEL AC		640 AC

## KEY MAP

Black Box Represents Specific Area



# 27

S55  
POS  
138 AC

S2  
LDR  
33 AC

S62 / POS  
8 AC

S23  
HDR  
33 AC

S24  
HDR  
34 AC

S36  
CC  
14 AC

S22  
HDR  
40 AC

S63 / POS  
11 AC

S34  
CC  
6 AC

S46  
P/SP  
4 AC

S25  
HDR  
24 AC

S10  
MDR  
5 AC

S45  
P/SP  
35 AC

S37  
CC  
24 AC

S38  
CC  
21 AC

S69  
POS  
21 AC

S28  
HDR  
16 AC

S71  
POS  
5 AC

S30  
HDR  
25 AC

S29  
HDR  
37 AC

S39  
CC  
42 AC

## LAUGHLIN RANCH TYPICAL SECTION IDENTIFICATION

# SECTION 28

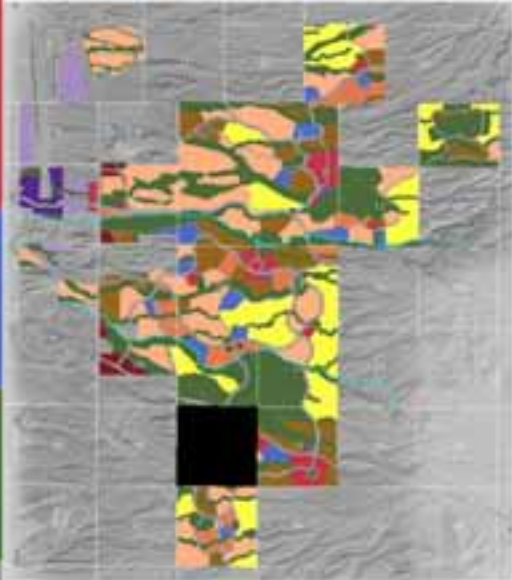
## LEGEND

MDR (Medium Density Res.)	158 AC
MHDR (Med. High Den. Res.)	16 AC
HDR (High Density Res.)	54 AC
CC (Community Commercial)	26 AC
P/PS (Public/Semi-Public)	42 AC
POS (Parks & Open Space)	193 AC

TOTAL	489 AC
OUTPARCEL	124 AC
OVERALL PARCEL AC	640 AC

## KEY MAP

Black Box Represents Specific Area



# 28



## LAUGHLIN RANCH TYPICAL SECTION IDENTIFICATION

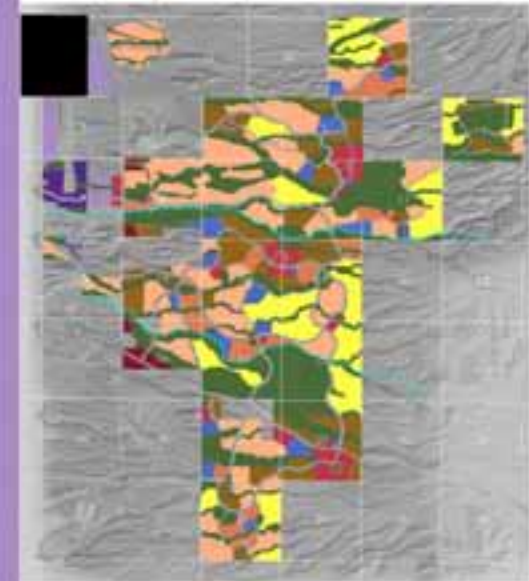
# SECTION 31

## LEGEND

LI	(Light Industrial)	8 AC
TOTAL		8 AC
OVERALL PARCEL AC		640 AC

## KEY MAP

Black Box Represents Specific Area



# 31

N73  
LI  
8 AC

## LAUGHLIN RANCH TYPICAL SECTION IDENTIFICATION



# SECTION 32

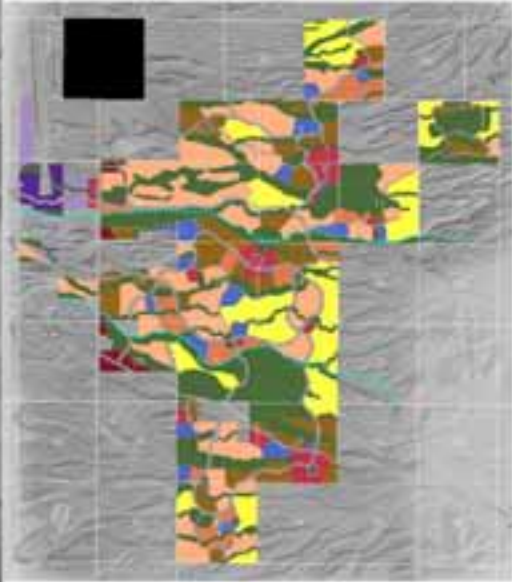
## LEGEND

MDR (Low Density Res.)	150 AC
LI (Light Industrial)	91 AC
POS (Parks & Open Space)	51 AC
Non-Laughlin Ranch Land	313 AC

TOTAL	605 AC
ROADS AS SHOWN	35 AC
OVERALL PARCEL AC	640 AC

## KEY MAP

Black Box Represents Specific Area



## LAUGHLIN RANCH TYPICAL SECTION IDENTIFICATION

# SECTION 33

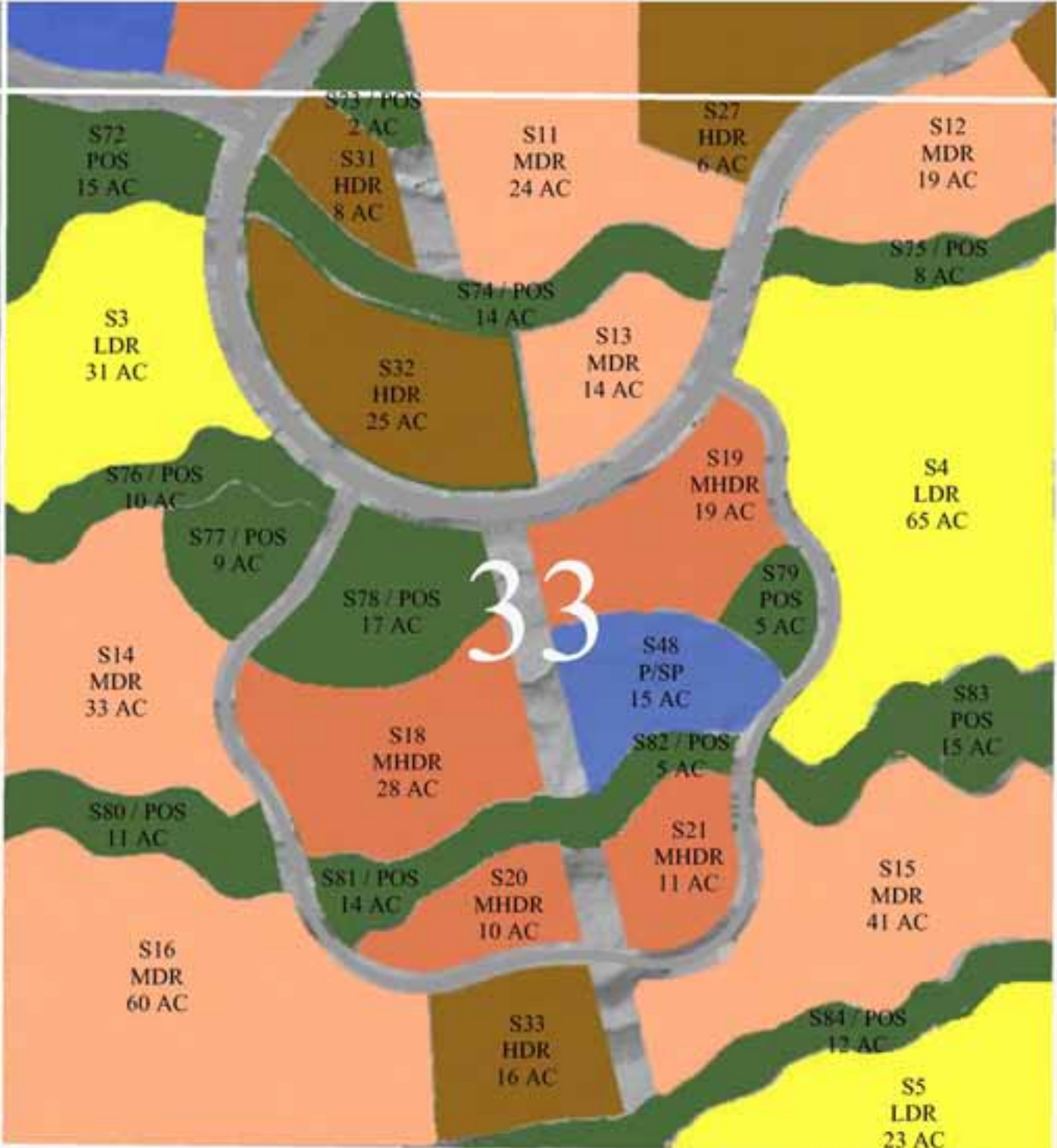
## LEGEND

LDR (Low Density Res.)	119 AC
MDR (Medium Density Res.)	191 AC
MHDR (Med. High Den. Res.)	68 AC
HDR (High Density Res.)	55 AC
P/PS (Public/Semi-Public)	15 AC
POS (Parks & Open Space)	137 AC

TOTAL	585 AC
ROADS AS SHOWN	55 AC
OVERALL PARCEL AC	640 AC

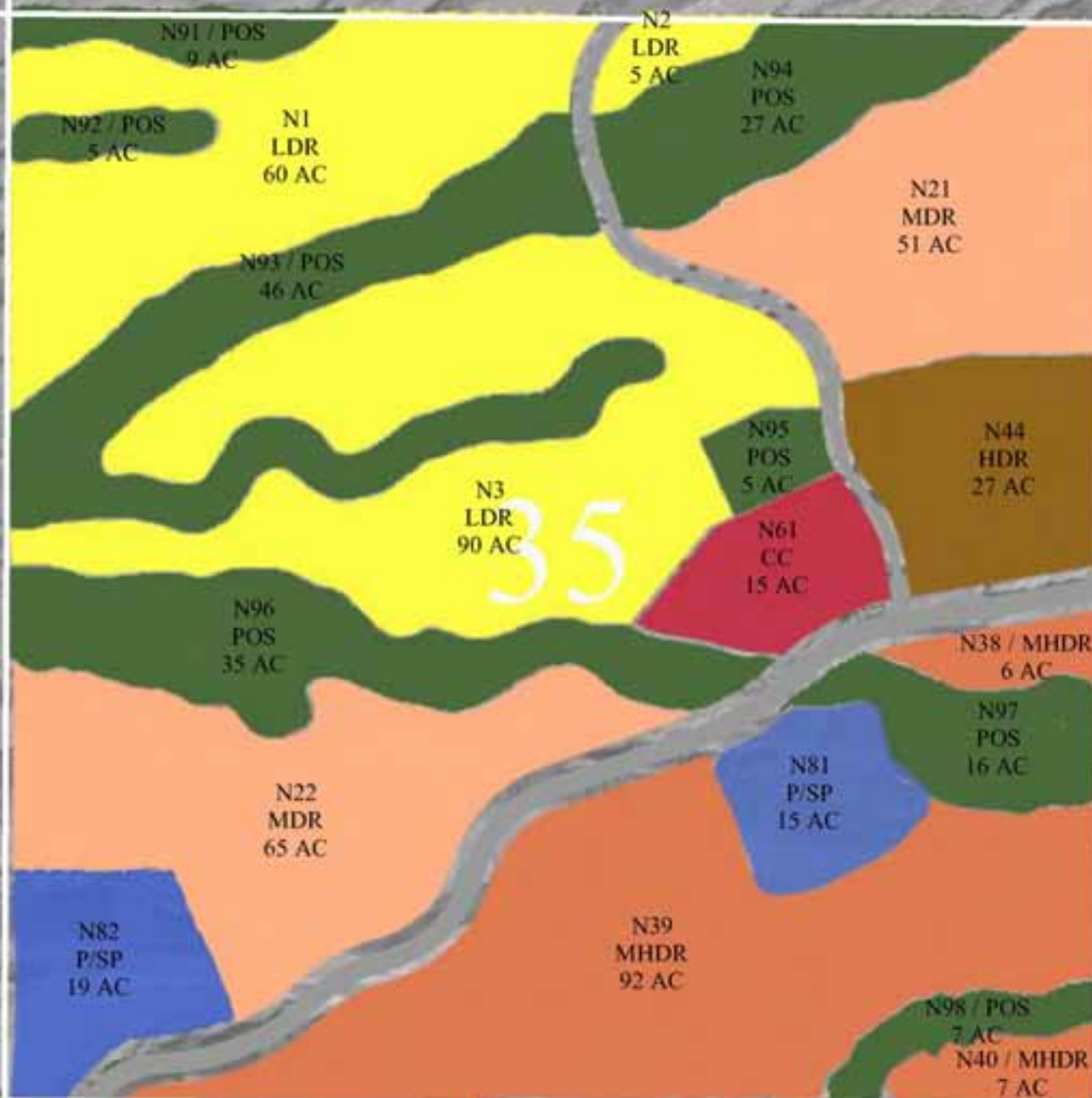
## KEY MAP

Black Box Represents Specific Area



## LAUGHLIN RANCH TYPICAL SECTION IDENTIFICATION

# SECTION 35



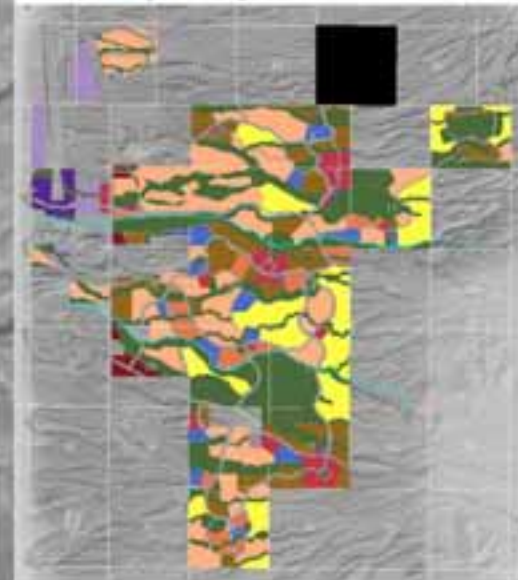
## LEGEND

LDR (Low Density Res.)	155 AC
MDR (Medium Density Res.)	116 AC
MHDR (Med. High Den. Res.)	105 AC
HDR (High Density Res.)	27 AC
CC (Community Commercial)	15 AC
P/PS (Public/Semi-Public)	34 AC
POS (Parks & Open Space)	150 AC

TOTAL	602 AC
ROADS AS SHOWN	38 AC
OVERALL PARCEL AC	640 AC

## KEY MAP

Black Box Represents Specific Area



## LAUGHLIN RANCH TYPICAL SECTION IDENTIFICATION